



10. (**Note:** Skip this step if you're only replacing the grab hook or cylinder) Remove the safety latch as shown in Figure 22 below.

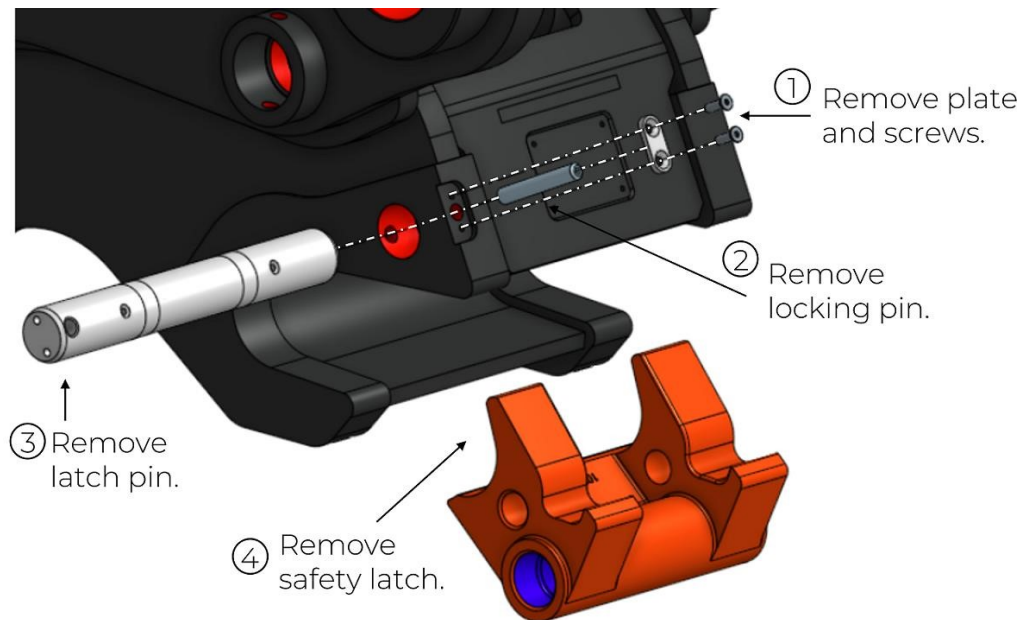


Figure 22: Removing the safety latch.



11. (**Note:** Skip this step if you're not replacing the safety latch) Attach the new safety latch as shown in Figure 23 below. Lightly grease the latch pin and the locking pin before inserting, and tightening screws with wedge lock washers to a torque of 15 N-m.

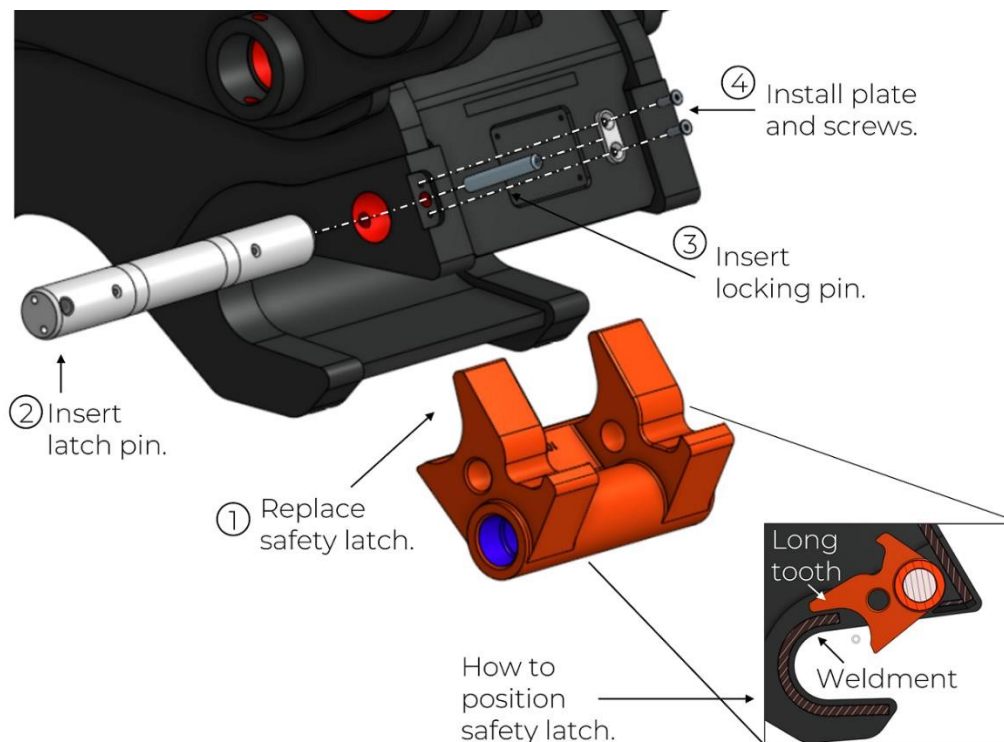


Figure 23: Replacing the safety latch.

(**Note:** Skip this step if you did not separate the grab hook and cylinder). Replace the cylinder and/or the grab hook as required, and then attach the cylinder to the grab hook as shown in Figure 24 below. Lightly grease the hook pin, the bushings, and the lock pin before inserting pins, and tightening screws with wedge lock washers to a torque of 15 N-m.

**Note:** The washers should be positioned on either side of the cylinder, between the cylinder and the hook so that the hook pin can slide through them.



**CAUTION:** Use lifting straps and a forklift to lift the cylinder.

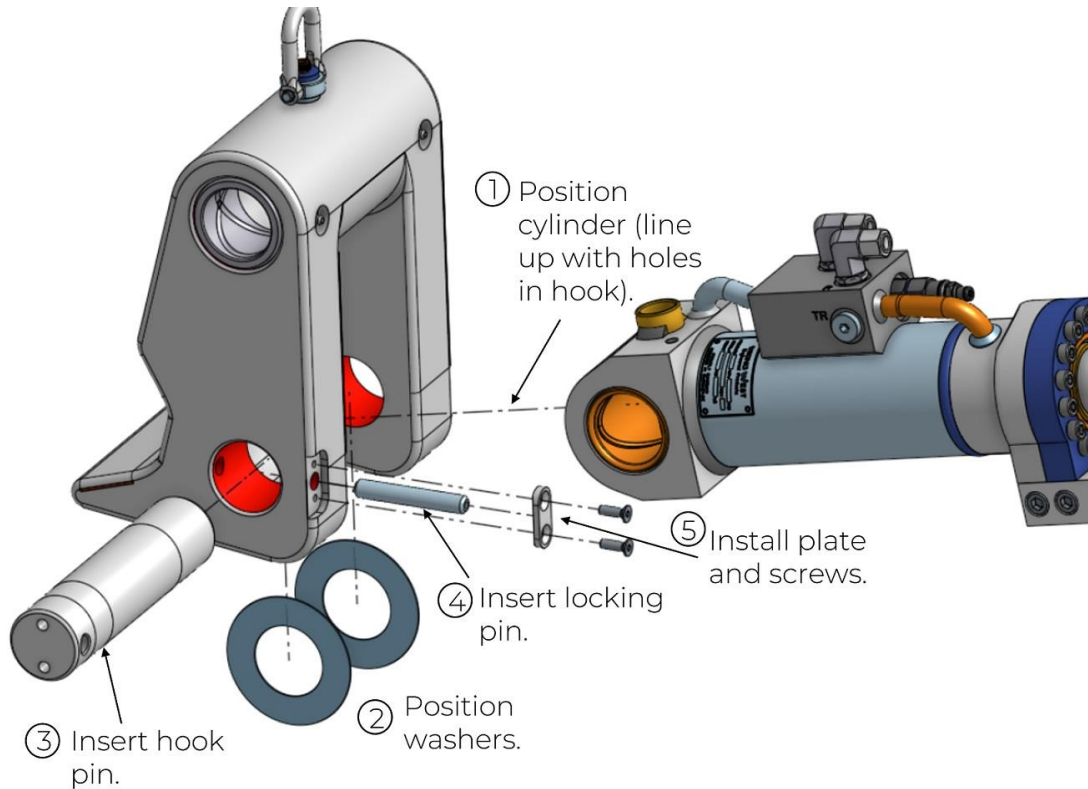


Figure 24: Reattaching the grab hook and cylinder.

12. Attach the cylinder and hook sub-assembly to the coupler as shown in Figure 25 below. Lightly grease the pins before inserting.



**CAUTION:** Use lifting straps and a forklift to lift the cylinder and hook sub-assembly, attaching the straps as shown in Figure 20 above.